

ONEIDA SMALL BUSINESS, INC.
3812 N. County Line Road
Oneida, WI 54155

Plaintiff,

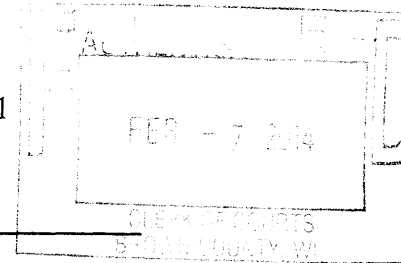
vs.

ROBERT YUMA THOMAS
1367 Doty Street
Green Bay, WI 54301

Defendants.

CASE NO.: 13 CV 1826

Case Code: 30301



ORDER ENTERING DEFAULT JUDGMENT

Based upon the supporting Affidavit previously filed with the Court, by Plaintiff,

IT IS FOUND, DETERMINED AND ADJUDGED:

The Plaintiff is entitled to a default judgment against the Defendant, Robert Thomas Yuma, and a Writ of Replevin to assist in the repossession of its collateral.

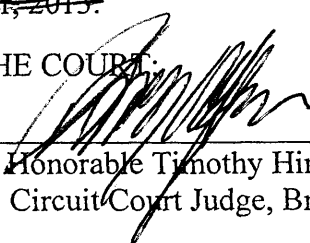
There is now due and owing to the Plaintiff, the sum of \$73,558.08. Said sum represents the original principal sum of \$73,558.08 as pled in the Motion for Default Judgment previously filed with the Court, plus statutory costs and disbursements of this action, including statutory attorney fees.

Judgment is entered in the sum of \$73,558.08 against the Defendant, for the benefit of the Plaintiff.

The Clerk of this Court will enter said default judgment.

Dated this the 7 day of ^{FILED 294} ~~December~~, 2013.

BY THE COURT:

By: 
Honorable Timothy Hinkfuss
Circuit Court Judge, Brown County, Wisconsin

LEWIS & VAN SICKLE, LLC
P.O. Box 107
Pulaski, WI 54162

Handwritten mark resembling a stylized 'd' or '1' at the bottom right corner.